

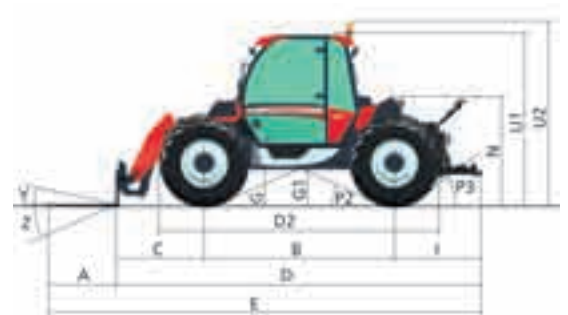
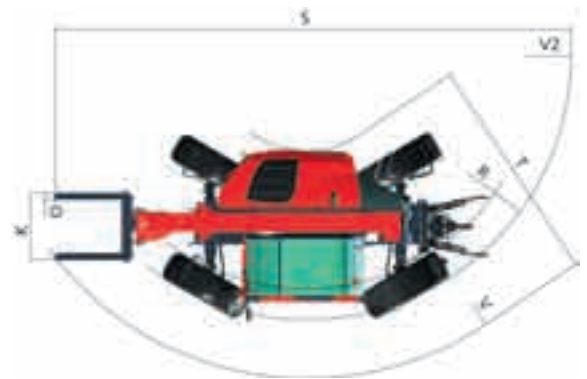
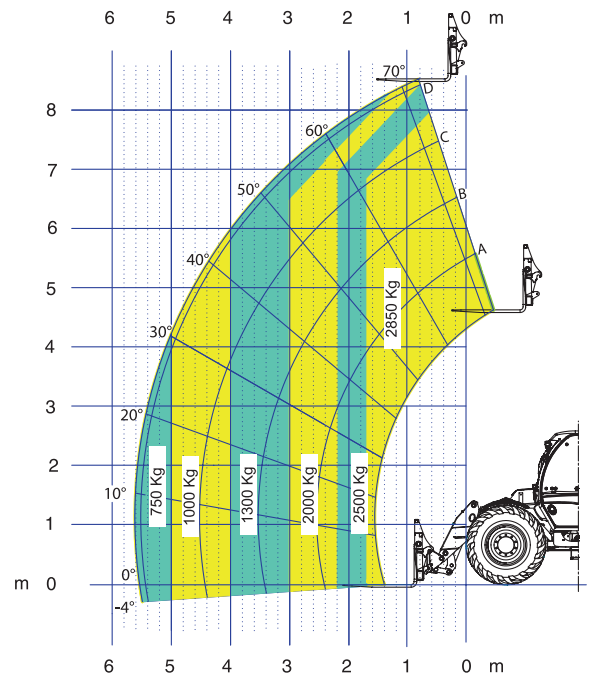


The TELE-TRAC is equipped with a latest generation 4-cylinder, 4400 cc, Tier 3 *SISU* diesel engine that, besides being more efficient, economical and environment-friendly, provides a 147 HP power rating with 110 HP available at the PTO.

The TELE-TRAC features a front-mounted telescopic boom providing a maximum lift height of 9 metres and a loading capacity of 3180 kg, as well as a rear mounted PTO and hydraulic lift with three-point linkage providing a lift capacity of 4500 kg. The patented "*Dual Drive System*" reversible driving position enhances the features of the TELE-TRAC telescopic tractor making it unique in its class.

The patented 40 km/h EVT hybrid transmission is the most advanced solution available on the market today. It consists of an automotive hydrostatic transmission integrated with a mechanical *Powershift* transmission combining the ergonomics of the former with the sturdiness of the latter. The cab is equipped with a new and excellent air conditioning system aimed at enhancing the operator's comfort. The TELE-TRAC incorporates the functions of a telescopic handler, farm tractor and forestry machine into a single vehicle which does the work of three different machines with significant benefits for the user both in terms of time saving and cost amortisation.

LOAD CHART



TELE-TRAC 150	
ENGINE	
SISU DIRECT-INJECTION, 4-CYLINDER DIESEL ENGINE TIER 3	44 CWA 2V
MAX. POWER ISO	KW/HP 108/147
MAX. PTO POWER ISO	KW/HP 81/110
DISPLACEMENT/ CYLINDERS	CM³ 4400 / 4
FUEL TANK CAPACITY	LT. 170
TELESCOPIC BOOM (PATENTED)	
MAX. LIFT CAPACITY	KG 3180
MAX. LIFT HEIGHT	M 8,6
MAX. REACH	M 5,6
MAX. HEIGHT AT MAX. PAYLOAD	M 8,6
REACH AT MAX. PAYLOAD	M 1,9
PAYLOAD AT MAX. HEIGHT	KG 2500
PAYLOAD AT MAXIMUM REACH	KG 900
ROTATION OF ATTACHMENT HOLDER PLATE	140°
TOWING CAPACITY	KG 9000
COUPLER FOR ATTACHMENTS	
WITH "EURO HITCH" HYDRAULIC QUICK-COUPLING	●
CAB AND DRIVING SEAT	
TOTAL ALL-ROUND VISIBILITY - FOPS AND ROPS APPROVED AS PER OCSE CODE	●
WIDTH 983 MM	●
D.D.S. REVERSIBLE DRIVING POSITION DUAL DRIVE SYSTEM (PATENTED)	●
AUTOMATIC AIR-CONDITIONING	●
DIGITAL INSTRUMENTS	●
PNEUMATIC SUSPENSION SEAT	●
TRANSMISSION	
E.V.T. (PATENTED) TRANSMISSION WITH 3 SPEED RANGES POWERSHIFT WITH (40 KM/H), ELECTRONIC CONTROL	●
PERMANENT FOUR-WHEEL DRIVE	●
FRONT AXLE WITH "LIMITED SLIP" SELF-LOCKING DIFFERENTIAL	●
REAR AXLE WITH ELECTROHYDRAULIC DIFF-LOCK	●
AXLE OSCILLATION + / - 8°	●
REAR PTO (110 HP)	
ELECTROHYDRAULICALLY CONTROLLED	●
PTO SPEED	RPM 540 / 1000
1"3/8 PTO SHAFT WITH 6 SPLINES	●
1"3/8 PTO SHAFT WITH 21 SPLINES	●
REAR LIFT	
CONTROL FUNCTIONS: POSITION, INTERMIX, FLOAT POSITION SHOCK ABSORBER	●
ELECTRONICALLY CONTROLLED WITH JOYSTICK	●
LIFT CAPACITY	KG 4500
THREE-POINT LINKAGE	CAT. 2
AUXILIARY VALVES	2
TOP LINK MECHANICALLY	●
HYDRAULICS	
LOAD-SENSING AXIAL PISTON HYDRAULIC PUMP	●
MAX. HYDRAULIC FLOW PUMP	LT/MIN. 100
TELESCOPIC BOOM/HYDRAULICS (OPERATING PRESSURE)	BAR 280 / 210
STEERING SYSTEM	
INTEGRAL BRAKING ON ALL FOUR WHEELS WITH WET DISC BRAKES (4 DISCS ON REAR AXLE/ 6 DISCS ON FRONT AXLE)	●
WITH 4 STEERING WHEELS AND 4 STEERING MODES	●
STEERING SYSTEM	
WITH 4 STEERING WHEELS AND 4 STEERING MODES	●
TYRES	
FRONT AND REAR	460/70 - 24 ○
FRONT AND REAR	405/70 - 24 ●
FRONT AND REAR	17,5 - 25 ○
FRONT AND REAR	500/70 - 24 ○
WEIGHT	
TOTAL WEIGHT	KG 8000
MAXIMUM TOWABLE MAS	KG 22000
APPROVED AS A FARM TRACTOR	
	●

Key: ● standard
○ option
— not available

DIMENSIONS MM

A	1200	I	1260	T	3795-4000
B	2850	J	983	U1	2590
C	1290-1370	K	1670	U2	2650
D	5690	N	1470	V	4725
D2	4790	O	125	V2	3430
E	6895	P2	38°	W	2250-2450
F	1805	P3	53°	Y	12°
G	542	R	3210-3682	Z	133°
G1	450	S	7390-7790		

150 - 45 x 9 x 30

TELE TRAC





TELE-TRAC, the new generation of **Tele-tractor** with **reversible driving position**.

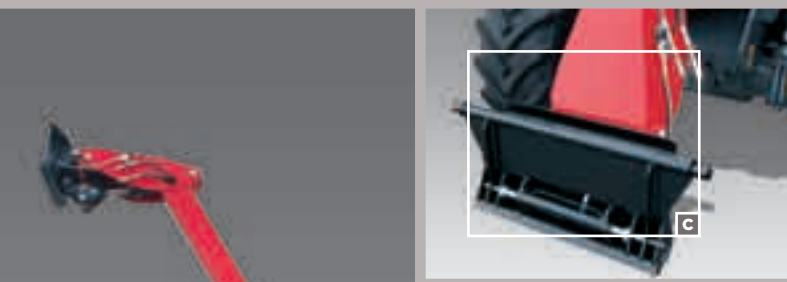
TELE-TRAC is the name of the new telescopic tractor specially developed by McCormick for industrial, agricultural and forestry applications. Extremely innovative and functional, the TELE-TRAC is an all-round tractor that combines the development in the Telescopic Handlers with McCormick's long-established expertise in tractor design and manufacture.



SIDE-MOUNTED SISU "TIER 3" ENGINE WITH REAR TILTING HOOD

The TELE-TRAC is equipped with a *SISU 44 CWA 2V, 4-cylinder*, air-to-air after-cooled, new generation engine. This engine, which delivers a 147 HP (ISO) power rating, provides a high torque backup, improved fuel consumption and low noise while complying to the *Tier 3* standards governing emissions into the environment.

The rear tilting hood provides easy access to the engine for routine service and maintenance. (fig. A)



TELESCOPIC BOOM WITH PATENTED CARTRIDGE-TYPE INNER EXTENSION SYSTEM AND "EURO HITCH" COUPLER FOR FARM IMPLEMENTS

The boom of the TELE-TRAC, controlled via a *joystick*, reaches a maximum lift height of 9 metres and a lifting capacity of 3180 kg. (fig. B)

Compact, light weight and clean in design, the boom allows the operator maximum visibility for fast operating speed in any work condition, thanks to the cartridge-type boom extension system, which is safely located inside the boom frame leaving no elements exposed.

The hydraulically operated "*Euro Hitch*" coupling hook for quick change of farm implements further enhances the comfort and productivity of the machine. (fig. C)

Safe boom operation is ensured by an electronic anti-overturning device named "*Anti Rocker System*" sending an audible alarm when a dangerous angle of inclination is detected.



PATENTED "ELECTRONIC VARIABLE TRANSMISSION", A 40 KM/H HYBRID HYDROSTATIC + MECHANICAL TRANSMISSION FOR IMPROVED COMFORT AND PRODUCTIVITY

The new, revolutionary patented E.V.T. hybrid + mechanical transmission developed by *McCormick* combines a hydrostatic transmission with *automotive-style* control featuring a variable-displacement, closed-loop load sensing axial piston pump and motor with a new, specially built three-range *Powershift* transmission. The system is electronically controlled via a dedicated software designed to integrate the functions of the two transmissions.

The EVT transmission enables the operator to select from a choice of three speed ranges with the third range reaching a maximum speed of 40 km/h. With his left hand the operator can use the push-button controls of the gearshift to either select the speed range or shift into reverse, even while in motion, without taking his hands off the wheel. (fig. D)







TELE-TRAC, ultimate
versatility with the “**DDS**”
reversible driving position.

ELECTRONICALLY-CONTROLLED REAR POWER LIFT AND PTO TO OPERATE TRAILED OR FRONT MOUNTED FARM IMPLEMENTS

With the accuracy of electronics the rear lift provides all main functions ensuring comfortable fingertip control of farm implements. The Cat.2 three-point linkage provides a maximum lifting capacity of 4500 kg. The hydraulically operated wet disc clutch enables smooth and progressive engagement of the PTO, preventing abrupt starting of the shaft for improved comfort.

The 1¹/₃ PTO provides two basic speeds of 540/1000 rpm and delivers an output power of 110 HP/ISO, the highest in this class of machines (fig.E). Farm implement are operated by two hydraulic rear auxiliary valves mechanically controlled via a joystick located in the cab.

THE ONLY ONE WITH FOUR DIFFERENT PATENTED STEERING MODES.

The TELE-TRAC features axial type axles with central differential and final reduction gears located in the wheel hub. The four wheel drive and the integral braking system with wet disc brakes ensure maximum safety under all operating conditions.

Telescopic handlers currently available on the market offer a choice of three steering modes:

- 1) front-wheel steer only.
- 2) coordinated four-wheel steer for tight turning.
- 3) crab steer for lateral side movements.

The TELE-TRAC offers an additional steering mode, allowing the vehicle to be steered using the rear wheels only.

This option, which is totally new for telescopic handlers, completes the range of possible steering modes while enhancing the tractor reversibility.

CAB WITH PATENTED DUAL DRIVE SYSTEM REVERSIBLE DRIVING POSITION FOR ENHANCED VERSATILITY

By combining the telescopic boom in the front and the hydraulic power lift in the rear with the reversible driving position McCormick has obtained a unique, all-round, two-way machine that enables special farm implements to be operated with ease for unequalled versatility.

The D.D.S. reversible driving position is an innovative yet practical mechanism that enables the turntable to which the seat and steering wheel are fitted to be turned by 180° in just five seconds (fig.F).

The cab with all-round visibility is one meter in width, being the largest available on the market today.

The quality, design and ergonomics of all controls integrated into both the stylish side console and the dashboard make driving a real pleasure.

The pneumatic suspension seat, the adjustable steering wheel, the excellent air conditioning system and the perfect soundproofing maximise the operator's comfort. (fig. G)

